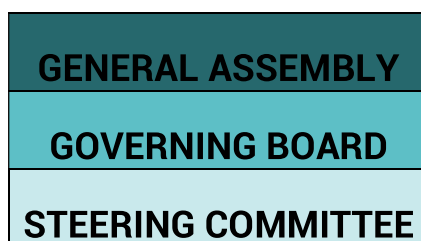




ITENE's governance structure

ITENE is governed by its General Assembly, made up of all the research centre's members, the Board of Directors, the Steering Committee, the Chair, Vice-Chairs, the Secretary and the Managing Director.

The General Assembly elects the research centre's Governing Board which, in turn, elects the Chair, the Second, Third and Fourth Vice-Chairs and the Secretary from amongst its members.



The Governing Board members hold office free of charge, without prejudice to the right to be reimbursed for expenses incurred in the performance of their duties, in accordance with Law 49/2002 of 23 December, on the tax regime for non-profit organisations, and in accordance with the organisation's articles of association.

GOVERNING BOARD

POSITION	Name and surname	Organisation
Chair	Ms. Marta Codoñer	AGLOLAK, S.L.
First Deputy Chair	Mr. Manuel Rosalén	GENERAL DIRECTOR OF INDUSTRY - VALENCIAN REGIONAL GOVERNMENT
Second Deputy Chair	Ms. Gracia Burdeos	THE SPB GLOBAL CORPORATION, S.L.
Third Deputy Chair	Mr. Carlos Viroque	VIROQUE TRANSPORTE Y LOGÍSTICA, S.L.
Fourth Deputy Chair	Mr. Ricardo Marí	CONSUM S. COOP. VALENCIANA
Secretary	Mr. José A. Balaguer	ANECOOP S. COOP

MEMBERS

Position	Name and surname	Organisation
Member	Mr. Rafael Escamilla	EXTERNAL RELATIONS DIRECTOR, IVACE – VALENCIAN REGIONAL GOVERNMENT
Member	Mr. Felipe Carrasco	GENERAL DIRECTOR OF INNOVATION - VALENCIAN REGIONAL GOVERNMENT
Member	Mr. Manuel Ríos	GENERAL DIRECTOR OF TRANSPORT AND LOGISTICS - VALENCIAN REGIONAL GOVERNMENT
Member	Mr. Jaime Agramunt	ADE LOGÍSTICA, S.L.
Member	Mr. Juan Ignacio Piquer	AFCO
Member	Mr. Axel González	HEINEKEN
Member	Mr. Joaquín Rodrigo	CAR VOLUM, S.L.
Member	Mr. Ricardo Marí	CONSUM S. COOP. VALENCIANA
Member	Mr. Fernando Arrufat	DS SMITH TECNICARTON, S.L.
Member	Ms. María Cardona	EMBUTIDOS MARTÍNEZ, S.A.
Member	Ms. María Rodríguez	EMSUR SAYMOPACK, S.L.U.
Member	Ms. Mireia García	HINOJOSA PACKAGING S.L.
Member	Ms. Elena Pons	IMPORTACO, S.A.
Member	Ms. Amaya Fernández	IRISEM, S.L.
Member	Mr. José Luis Olmedo	ITC PACKAGING, S.L.
Member	Mr. Pedro Ballester	LOGIFRUIT, S.L.U.
Member	Ms. Blanca Erum	PLÁSTICOS ERUM, S.L.
Member	Ms. Nuria Luna	PINTURAS BLATEM, S.L.
Member	Mr. Jorge Gresa	SP BERNER PLASTIC GROUP, S.L.