

The best practices (II): An overview on the best-in-class territories: Germany



IMPACTPaperRec Project Conference
Barcelona, 24 January 2017



Country facts Germany



- 16 states, **294** counties, **107** cities
- Area: **357 376** squ.km. (Spain: 505 970 squ.km.)
- Population: **82,2 million** (Spain: 46,4 million)
- Population density: **230 inhab. per squ.km.** (Spain: 92)



- **162** pulp and paper mills
- **22,6 million tons** production
- **16,8 million tons** utilisation of paper for recycling
- **74,0%** utilisation rate



Collection of paper for recycling

- Waste management is organised on city / county level, sometimes as group of cities & counties
- Separate collection is established in nearly all regions
- Dominant system is the Blue Bin for graphic & packaging paper



Bio waste – residual waste – paper & board for recycling

- Selective collection of graphic papers is also common

Separate collection of paper for recycling

- Door-to-door



- Bring bank



Horizon 2020
Programme

Grant No. 690182

Bring bank details

Paper & board for recycling

liquid packaging

tin/aluminium
cans

glass (brown-
green-white)



In addition: containers for old textiles



Horizon 2020
Programme

Grant No. 690182

Selective collection of graphic paper for recycling



Resource yard (recycling yard)

Quality control and/or sorting upon receiving!



Collection shop



No additional sorting necessary!

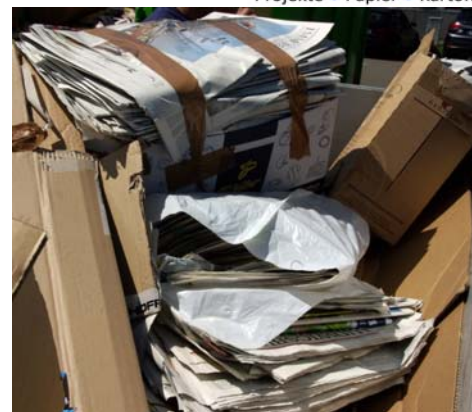
Volunteer collection

Kempten/Oberallgäu/Lindau – Paper collection systems

- Bring banks for every 500-600 citizens
- Resource yards for every 7500-8000 citizens (three paper fractions – packaging, mixed, news & mags)
- Blue bin (door-to-door) optional and free of charge
- Volunteer collection

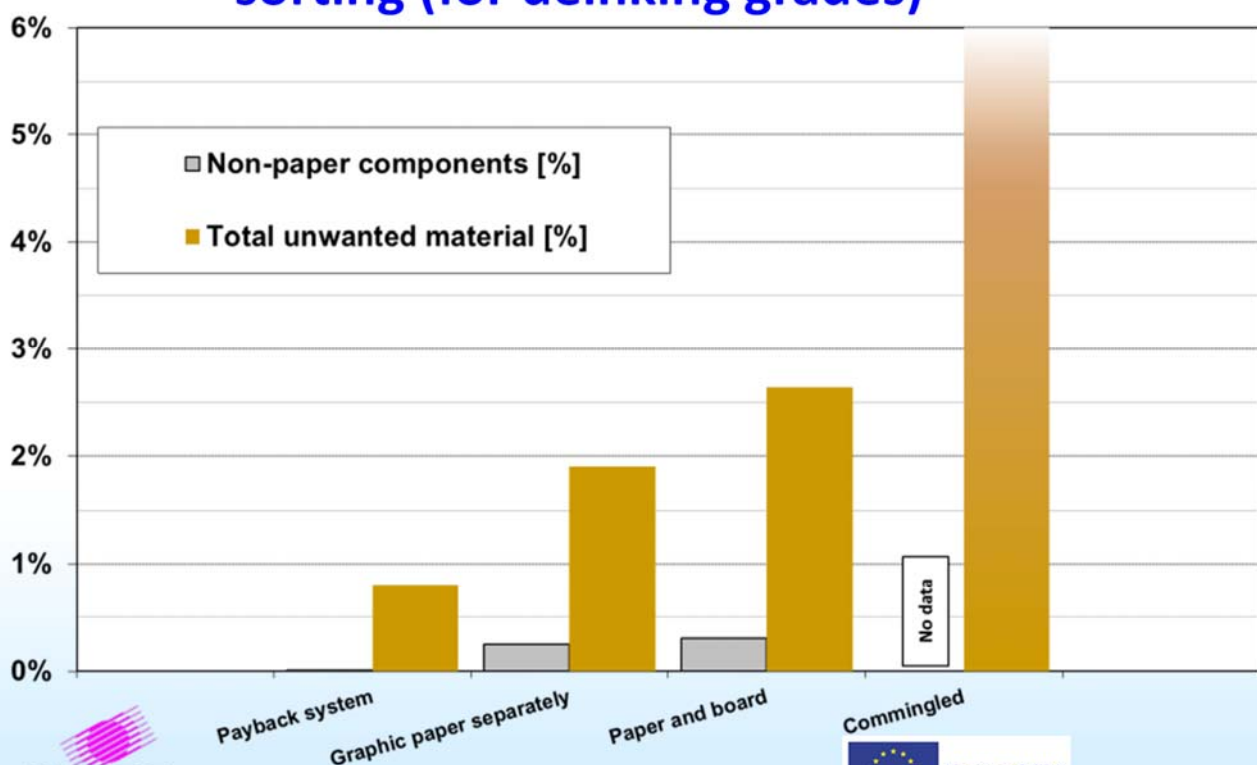


- Separate collection of paper is installed area-wide
- About one quarter of paper is collected selectively
- Citizens have free choice for paper – Blue bin (p&b), bring bank (p&b), recycling yard (selectively, three fractions), volunteer collection (selectively)
- Resource yards accept all fractions (e. g. non-recyclable demolition waste) – except residual and bio waste
- Using the recycling yards is free of charge
- Most containers are in a building or at least in a roofed shed
- Bring banks and recycling yards are clean and tidy
- Citizens are largely satisfied with the waste and resource management



- In the county of Ludwigsburg the area-wide door-to-door collection of paper is done by the green bin “flat” (paper, board, plastic films, foamed polystyrene)
- A selective collection of paper by the local sports club is done five to six times per year
- This means a selective collection of graphic papers of about 13%
- The county-owned waste and resource management company takes over from the collection point and refunds the club (guaranteed payment plus share of sales revenue)
- For the sports club, the collection is profitable (“higher revenue than by the street party”)

Influence of collection and sorting (for deinking grades)



- In Germany, separate collection of paper for recycling is installed
- There are also several systems of selective collection
- Selective collection does not require additional sorting since there is quality control and/or sorting upon receiving
- The type of collection determines the quality, even after sorting
- Good quality provides a positive revenue for the municipality
- Satisfaction of the citizens is the key!



Contact

PROPAKMA GmbH

Gerokstr. 40
74321 Bietigheim-Bissingen
Germany

Ph. +49 7142 37522-0

Fax +49 7142 37522-20

www.propakma.com

<https://twitter.com/propakmagmbh>

office@propakma.com



Sources

Pictures

- Biergarten: munichbeergardens.com
- Brandenburger Tor: [Wikimedia Commons](https://commons.wikimedia.org/)
- Brass band: br.de
- Rhine valley: partyboot.de
- Sauerkraut: ourgom.com
- Cuckoo clock: schwarzwaldpalast.de
- Westerhever lighthouse: nationalpark-wattenmeer.de

Facts

- K.-H. Lumer, presentation at EcoPaperLoop Seminar, July 2014
- A. Faul, M. Geistbeck and A.-K. Klar, presentation at Deinking Symposium 2014